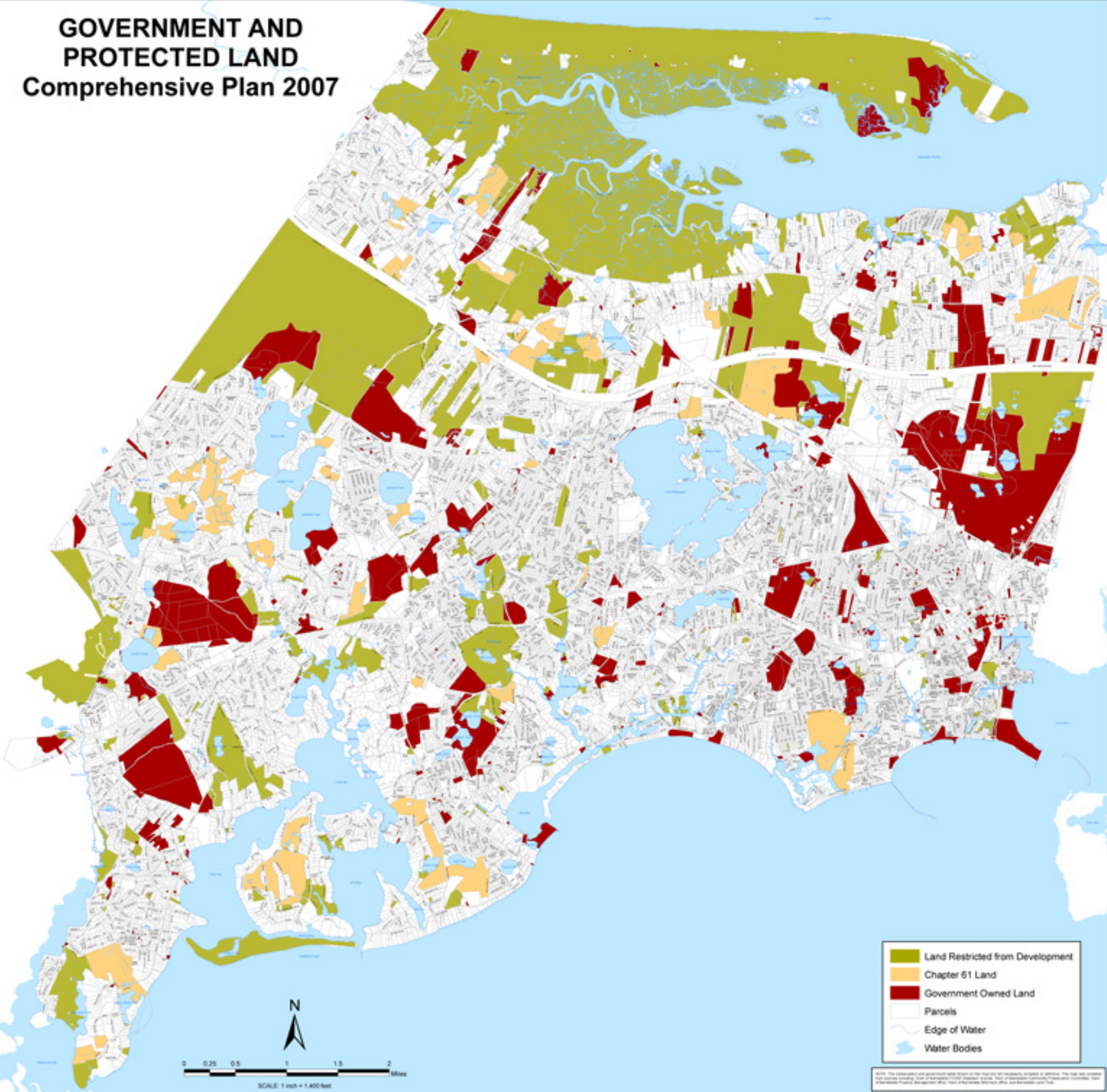


GOVERNMENT AND PROTECTED LAND Comprehensive Plan 2007



- Land Restricted from Development
- Chapter 61 Land
- Government Owned Land
- Parcels
- Edge of Water
- Water Bodies

NOTE: The boundaries and government ownership shown on this map are not necessarily accurate or official. This map was compiled from various sources, including the Florida Department of Natural Resources, the Florida Department of Transportation, the Florida Department of Environmental Protection, the Florida Department of Agriculture and Consumer Services, and the Florida Department of Banking and Finance.